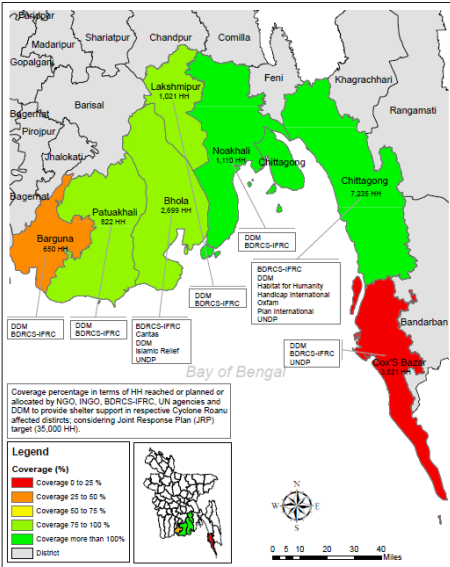


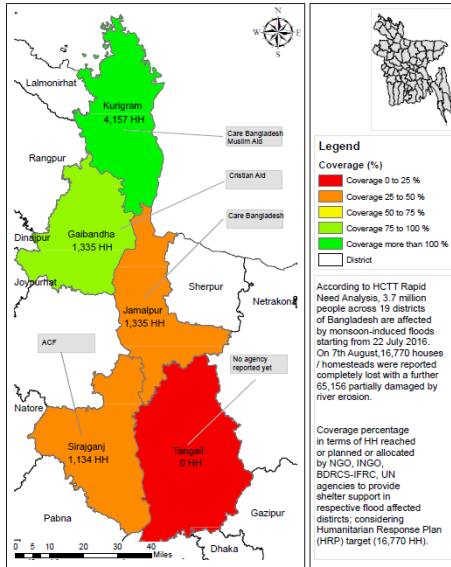
Cyclone Roanu 2016

Shelter Response Coverage
20 July 2016



Monsoon Flood 2016

Shelter Response Coverage
28 August 2016



CLUSTER TEAM

Cluster lead agency
Emergency: IFRC
Preparedness and Recovery: UNDP

National Coordinator (Emergency)
Marielle Pettersson (IFRC)
marielle.pettersson@redcross.se / +88 01713273601

National Coordinator (Preparedness and Recovery)
Khurshid Alam (UNDP)
khurshid.alam@undp.org / +88 02 55667788

Information Management Officer
Saudia Anwer (UNDP)
saudia.anwer@undp.org / +88 01680279612

Technical Coordinator
Hasibul Bari Razib (IFRC)
hasibul.bari@ifrc.org / +88 02 9337314

NEED ANALYSIS

Cyclone Roanu

- Joint response plan of HCTT targeted 35,000 HHs to provide support in terms of emergency shelter and NFIs.

Monsoon Flood

- People displaced by floods are staying on the nearest high ground to their houses. This includes roof tops, roads, and embankments as well as in flood shelters and schools.
- Over 250,000 houses have been damaged or completely destroyed.
- 16,770 houses have been washed away due to river erosion and over 65,000 houses/ homesteads have been damaged due to erosion.

RESPONSE

Cyclone Roanu

- 13,333 HHs have been supported with emergency shelter items and 10,860 HHs have been supported with NFIs.

Monsoon Flood

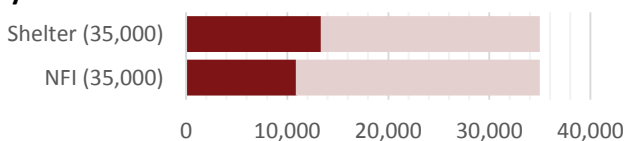
- 12,661 HHs have been supported with emergency shelter (mostly tarpaulins) but some HHs have also received cash grants.
- 10,220 HHs have been supported with NFI items.

GAPS / CHALLENGES

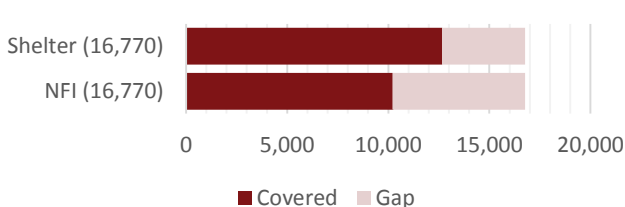
- Limited options for supporting HHs affected by river erosion when house and homestead fully washed away.
- Limited funding available for shelter and NFI support.

COVERAGE AGAINST TARGETS (HH)

Cyclone Roanu



Monsoon Flood



KEY DATES

- 21st of May Cyclone Roanu made landfall in the southern coastal region of Bangladesh.
- Start of floods around 19th of July
- Release of HCTT Multi-sector Rapid Needs Analysis report 8th of August.
- Publication of Humanitarian Response Plan 15th of August.

KEY DOCUMENTS

- [Technical guidance](#)

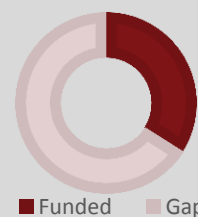
KEY LINKS

- [Country page on ShelterCluster.org](#)
- [Country page on HumanitarianResponse.info](#)
- [Country page on ReliefWeb](#)

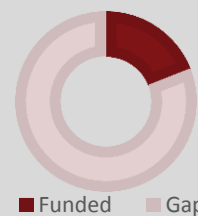
KEY FIGURES

15 Cluster partners **3,7 m / 0,13 M** People in need / targeted

FUNDING



Cyclone Roanu
Total funding required:
3.5 M



Monsoon Flood
Total funding required:
1.6 M