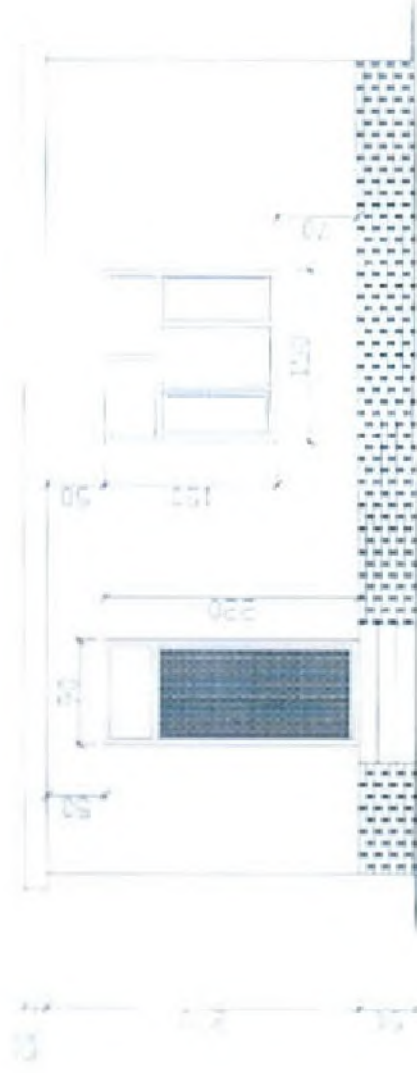


ANNEX 5: SHELTERS DRAWINGS (3 sizes – 18 / 25 / 35 Sqm)



SMALL SIZED FAMILY SHELTER (SSFS) – 18m²

SECTION DRAWING – FRONT VIEW



NOTES:

• Livable space 18m²

• Dimensions in cm

• Drawings not to scale

• Drawn by Eng. Mohammed Basa Part

• Checked by Eng. Habbibullah Mujedidi



SHELTER GUIDELINES



SMALL SIZED FAMILY SHELTER (SSFS) – 18m²

PLAN DRAWING – FOUNDATION VIEW



NOTES:

Usable space 18m²

Dimensions in cm

Drawings not to scale

Drawn by Eng. Mohammad Feroz Tariq

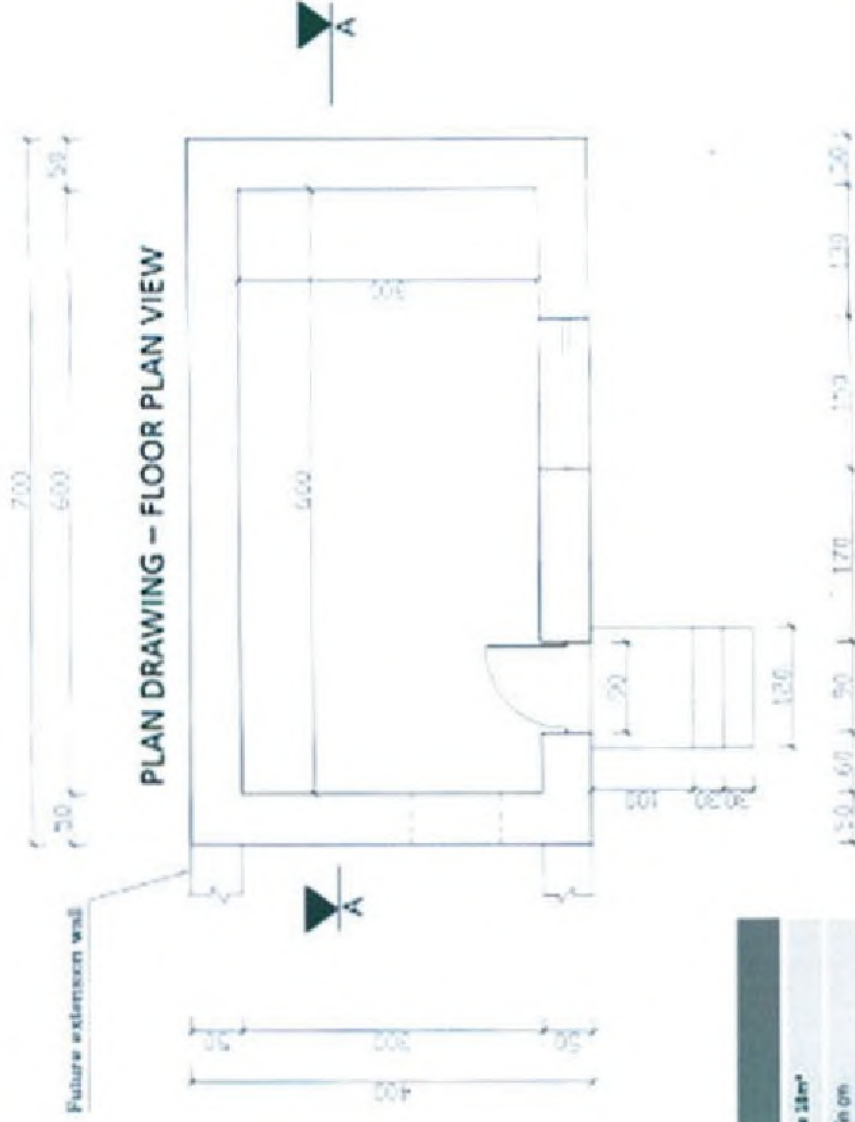
Checked by Eng. Habibullah Mujaddidi



SHELTER GUIDELINES



SMALL SIZED FAMILY SHELTER (SSFS) – 18m²



NOTES:

Usable space 18m²

Dimensions in cm

Drawings not to scale

Drawn by Eng. Mohammed Basa Yari

Checked by Eng. Habbibullah Mujaddi

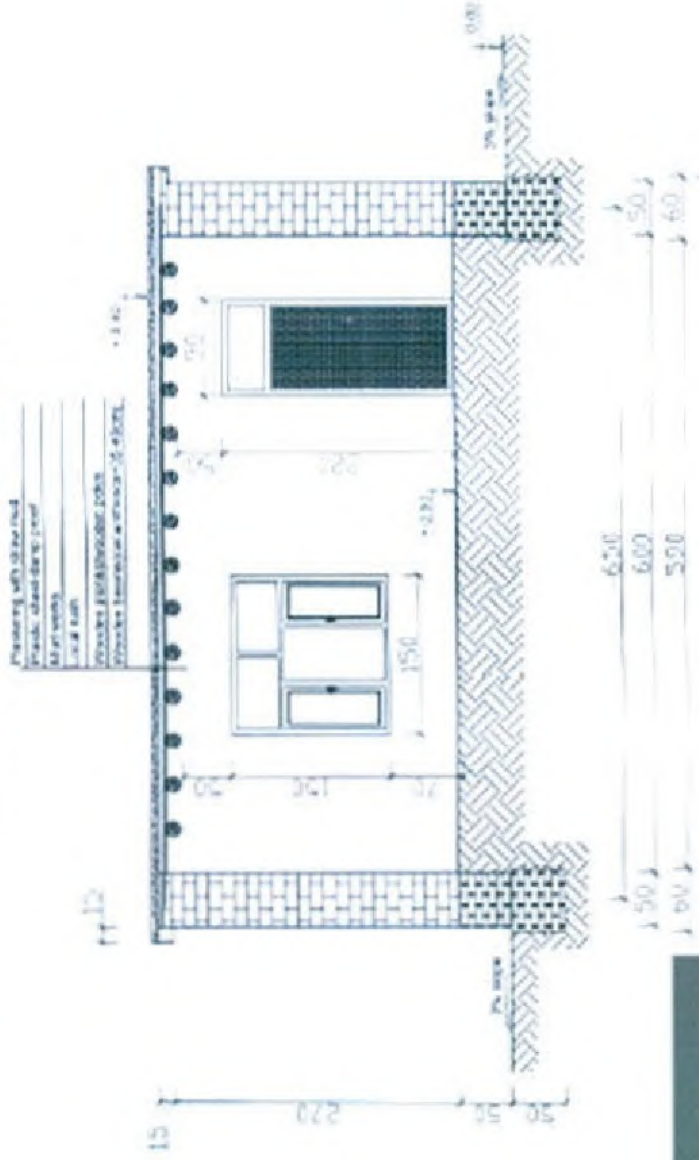


SHELTER GUIDELINES



SMALL SIZED FAMILY SHELTER (SSFS) – 18m²

SECTION DRAWING – LONG SECTION



NOTES:

1. Livable space 18m²

2. Dimensions in cm

3. Drawings not to scale

Drawn by Eng. Muhammad Ezzat Yari

Checked by Eng. Habibullah Mujiedat



SHELTER GUIDELINES