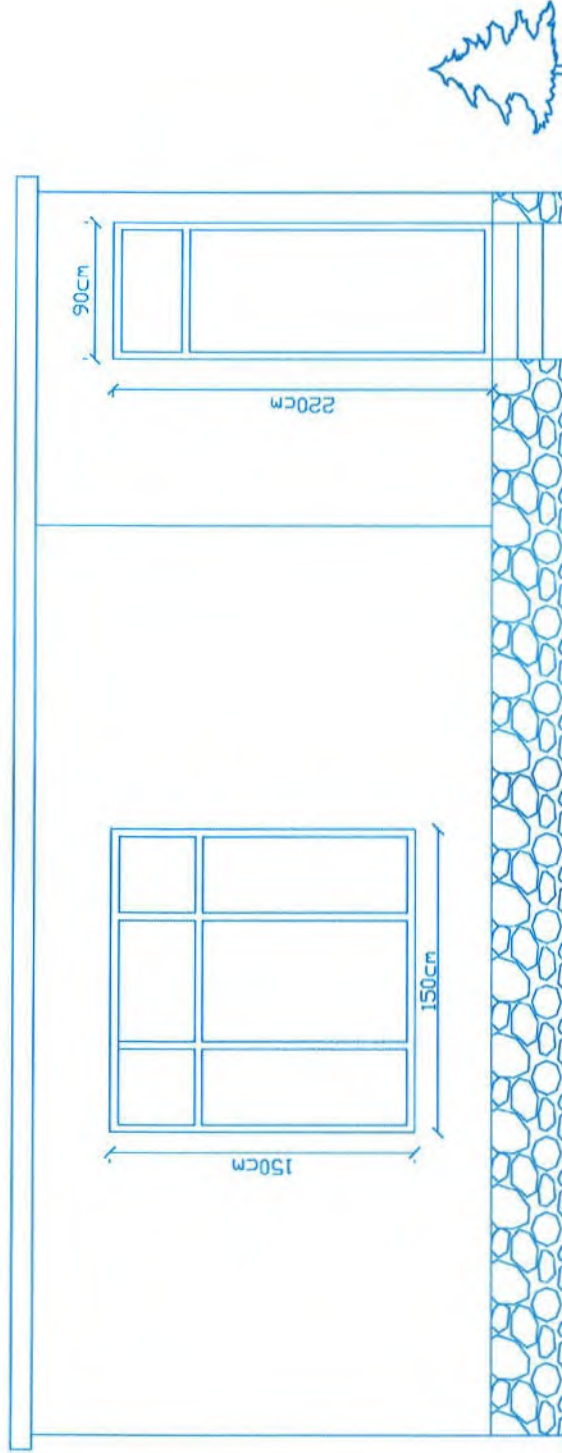


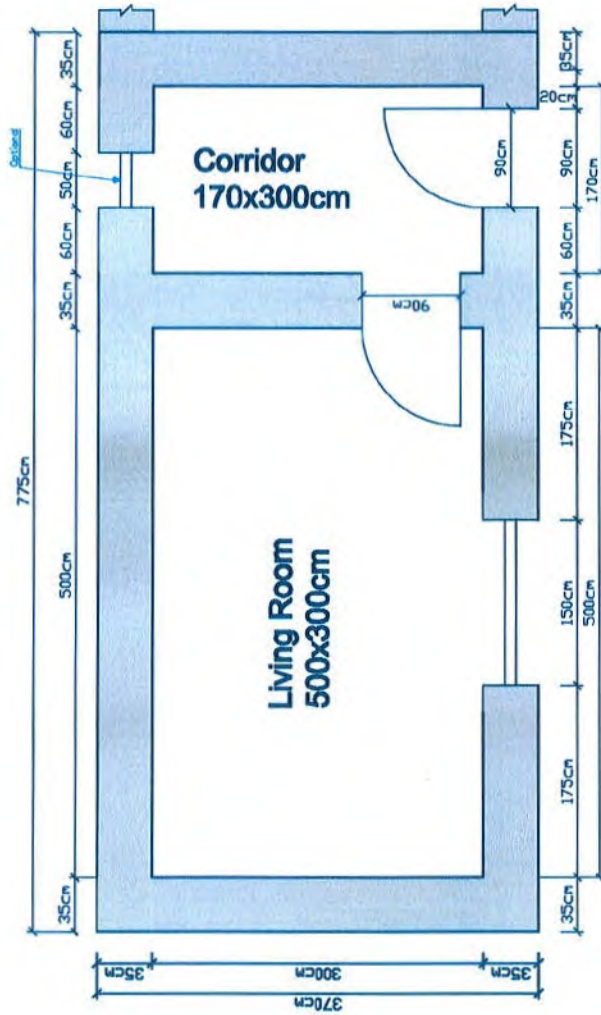
**Shelter for Afghan Returnees/IDPs  
Front Elevation-one room shiter**



**Drawing details**

	<b>Drawn by</b> <b>Eng.Aboraihan safi</b>		<b>Approved by</b> <b>J.Subhash</b>		<b>Date</b> <b>01/01/2013</b>	

**Shelter for Afghan Returnees/IDPs  
Floor plan- one room shelter**



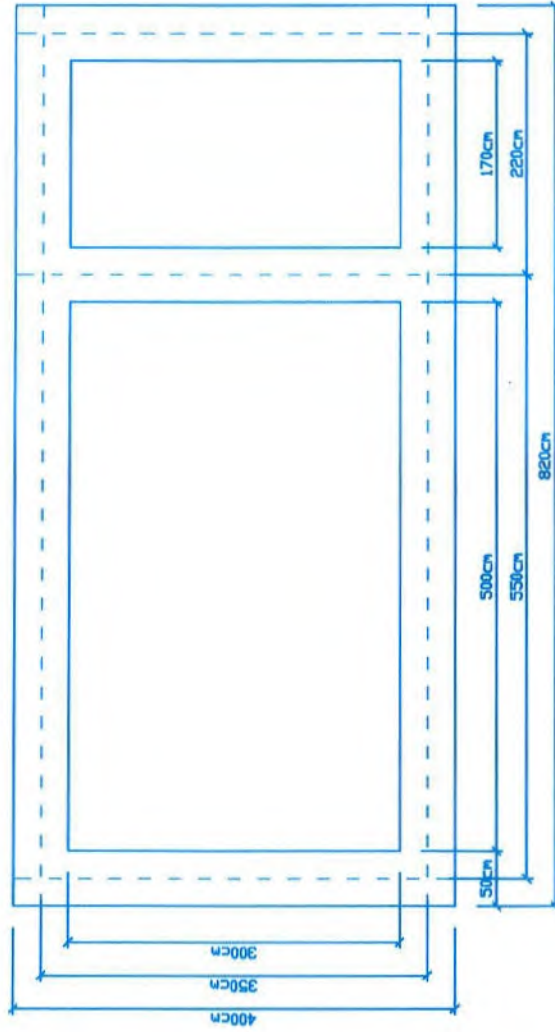
**Drawing details**

Drawn by	Approved by	Date	Total floor area	Total plinth area
Eng.Abdoulhamid	J.Sabbash	01/01/2013	20.1 sqm	28.68 sqm



NORWEGIAN  
REFUGEE COUNCIL

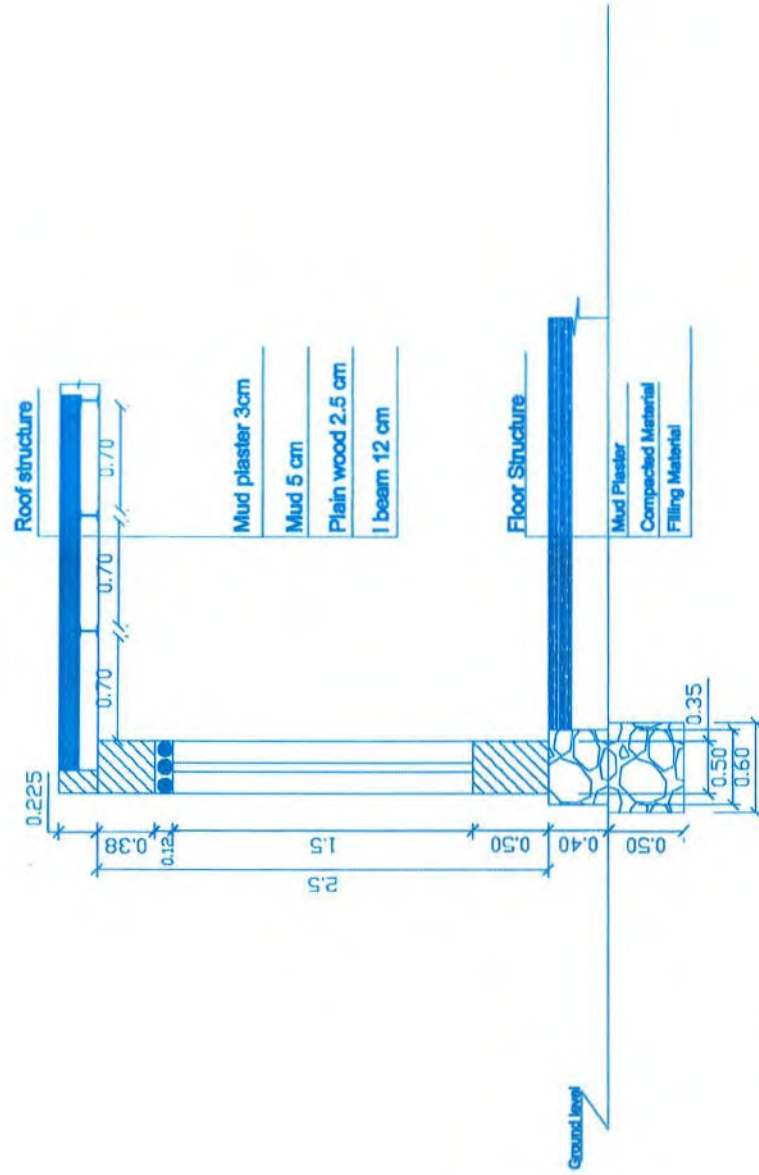
**Shelter for Afghan Returnees/IDPs  
Foundation plan- One room shelter**



**Drawing details**

	Drawn by	Approved by	Date	Total floor area	Total plinth area
	Eng.Aboratibon asif	J.Sabbash	01/01/2013	20.1 sqm	32.8 sqm

## Shelter for Afghan Returnees/IDPs Vertical section-one room shifter

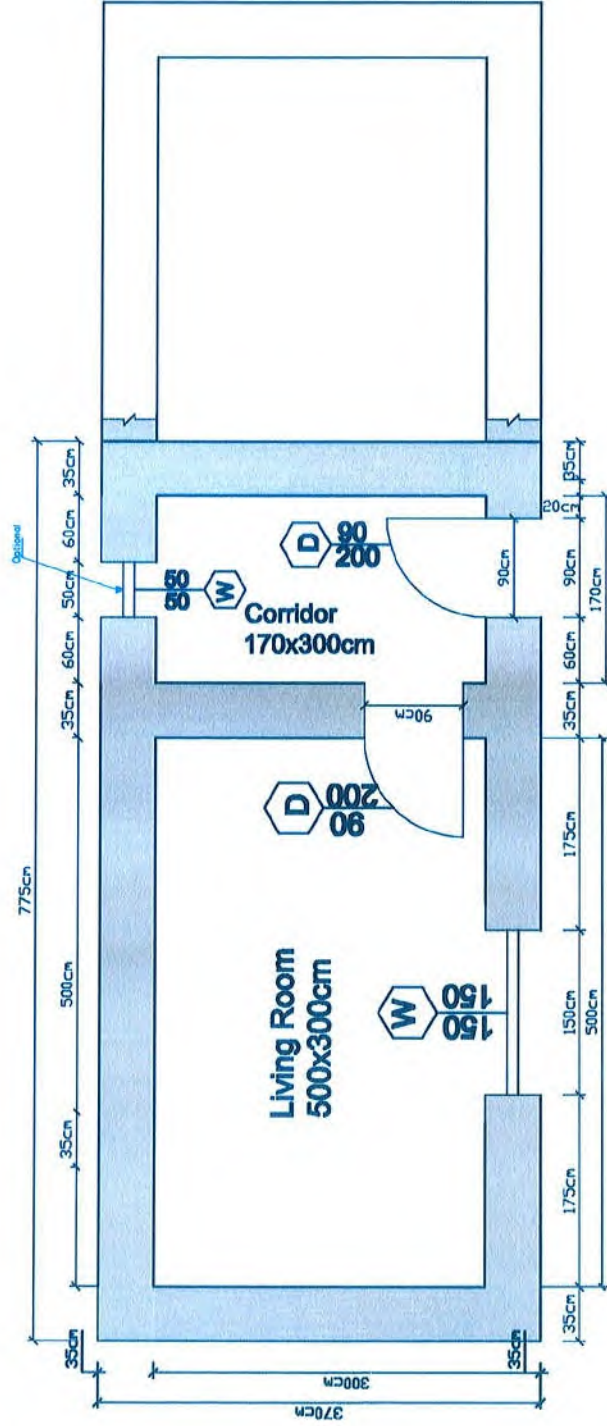


### Drawing details

	Drawn by	Approved by	Date
	Eng. Aboraihan safi	J. Subhash	01/01/2013



**Shelter for Afghan Returnees/IDPs  
Floor plan- one room shelter**



**Drawing details**

	Drawn by <b>Eng. Abouelhasan safi</b>	Approved by <b>J. Subhah</b>	Date <b>01/01/2013</b>	Total floor area <b>20.1 sqm</b>	Total plinth area <b>28.68 sqm</b>
--	--	---------------------------------	---------------------------	-------------------------------------	---------------------------------------

BoQ for one room shelter & household latrine for UNHCR Project in Khost									
Items	Description	Specification	Quantity/ shelter	Unit	Unit Price AFA	Total Price AFA	Unit price in \$	Component	Kind of assistance provided by NRC
Tool kit	Pickax with handle	(2-2.1) kg wooden handel (L=90-100)cm (Circumference =12-15) cm	1	Piece			\$ -	SHELTER	Materials
	Bucket	20 lits local made	1	Piece			\$ -		
	Measuring tape	5 m made in China	1	Piece			\$ -		
	Hand saw	(18"-20") made in China	1	Piece			\$ -		
	Shovel	1.4 kg wooden handel L=1.5m,Cir 15 cm made in China	1	Piece			\$ -		
	<b>Total Tool kit cost</b>						\$ -		
C Braces	Timber corner Brace	(5x5x180) CM-Pakistani popoler timber	8	piece			\$ -	SHELTER	Materials
		<b>Total corner braces cost</b>					\$ -		
RCC slabs set for latrine	RCC squatting slab	(120X120 X 5) CM, M200 with crush	1	piece			\$ -	LATRINE	Materials
	RCC vault door-latrine	(55x55x5)CM, M200,with crush	1	piece			\$ -		
	RCC Vault frame -latrine	(66x66x5)CM, M200,with crush	1	piece			\$ -		
	<b>Total RCC slabs set cost for latrine</b>						\$ -		
Doors, Window & window glasses,etc	Shelter main doors for entrance	(90X200)CM, frame size=(40x40x3)MM, door shutter=(35x35x3)MM,door Iron sheet and all elments shall be coated with two layers of anti corrosion and two layers of gray paint by spraying.	2	Piece			\$ -	SHELTER	Cash
	Window glasses	3 mm plain glass fixing wit screws	4	Piece			\$ -		
	Shelter Window	(150x150)cm, window frame=(40x40x3)MM, Anchor=(40x40x3)MM, L=200MM,welding & fininshing general quality and all elements shall be coated with two layers of anti corrosion and two layers of gray paint by spraying with 3 mm plain glass fixing	1	Piece			\$ -		
	<b>Total doors,windows &amp; window glasses, etc</b>						\$ -		
Roofing materials	Pakistani round timber	35-40Cir,L= 400 CM for roofing	20	Piece			\$ -	SHELTER	Cash
	Pakistani round timber	35-40 Cir, for window lintel L= 250CM	3	Piece			\$ -		
	Pakistani round timber for door lintel -	30-40 Cir, L= 150CM	6	Piece			\$ -		
	Pakistani Wooden Planks	(180*20*2.5 )CM	82	Piece			\$ -		
	Plastic sheet good quality	for roofing	30	sq.m			\$ -		
	Tray . Chanjel	for withdraw of rain water	3	Piece			\$ -		
	<b>Total Roofing materail cost</b>						\$ -		
Latrine materials	Wooden pole for latrine roof	30-35 Cir,L=150 CM	3	Piece			\$ -	LATRINE	Cash
	Wooden Planks for latrine roof	(180x 20 x 2.5)CM Pakistani	7	Piece			\$ -		Materials
	PVC pipe	4", L=300CM,for ventilation	1	Piece			\$ -		Materials
	PVC pipe	3" l=400CM,for bathroom	1	Piece			\$ -		Materials
	PVC pipe	2" L=300CM,for latrine urine pipe	1	Piece			\$ -		Materials
	Clifs	for fitting of urine pipe	2	Piece			\$ -		Materials
	PVC elbow	Dia=2" for fitting of urine pipe	3	Piece			\$ -		Materials
	Nails ( steel)	Dia=2" for fixing of clifs	4	Piece			\$ -		Materials
	latrine door	(80X180)CM, frame size=40x40x3MM,door shutter=(35x35x3)MM,door Iron sheet, shall be coated with two layers of anti corrosion and two layers of gray paint by spraying.	1	piece			\$ -		Cash
	Mesh nets	(40x40/1)CM,(30x30/1)CM	2	Piece			\$ -		
	<b>Total Latrine cost</b>						\$ -		
Labour costs	Shelter labour	Cash grant for labours	1	sum			\$ -	SHELTER	Cash
	Latrine labour	Cash grant for labors	1	sum			\$ -	LATRINE	
	<b>Total labour costs grant per beneficiary</b>						\$ -		
<b>Sub Total cost:</b>								\$ -	

TOTAL CASH GRANT PER BENEFICIARY:  
TOTAL MATERIALS GRANT PER BENEFICIARY:  
SUB TOTAL GRANT
