

Shelter Cluster Nepal Update on Recovery and Reconstruction

RRWG Launch Meeting
10th September



Presentation Contents

1. Shelter Cluster Nepal
2. Recovery and Reconstruction Survey Analysis
3. Recovery and Reconstruction Working Group
4. Shelter Cluster Recovery Position Paper
5. Collective Approach to Technical Assistance



SHELTER CLUSTER NEPAL



Shelter Cluster Nepal

- Functioning in Nepal since the Koshi Flood response in 2009
- Cluster lead MOUD/DUDBC, co-lead IFRC/NRCS
- Strategy and technical guidance on SC website http://sheltercluster.org/sites/default/files/docs/strategic_and_technical_guidance_10.08.2015.pdf

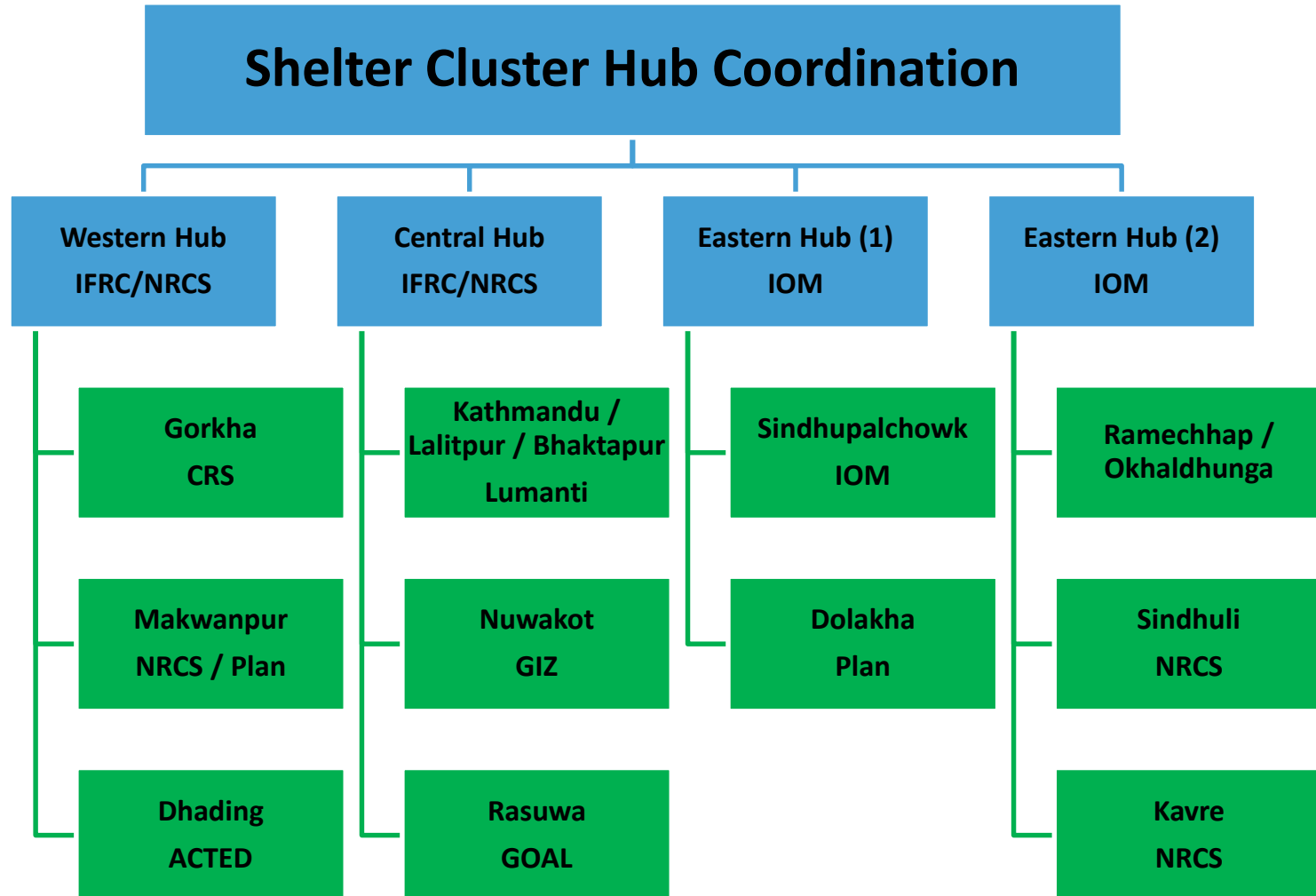


Achievements to Date

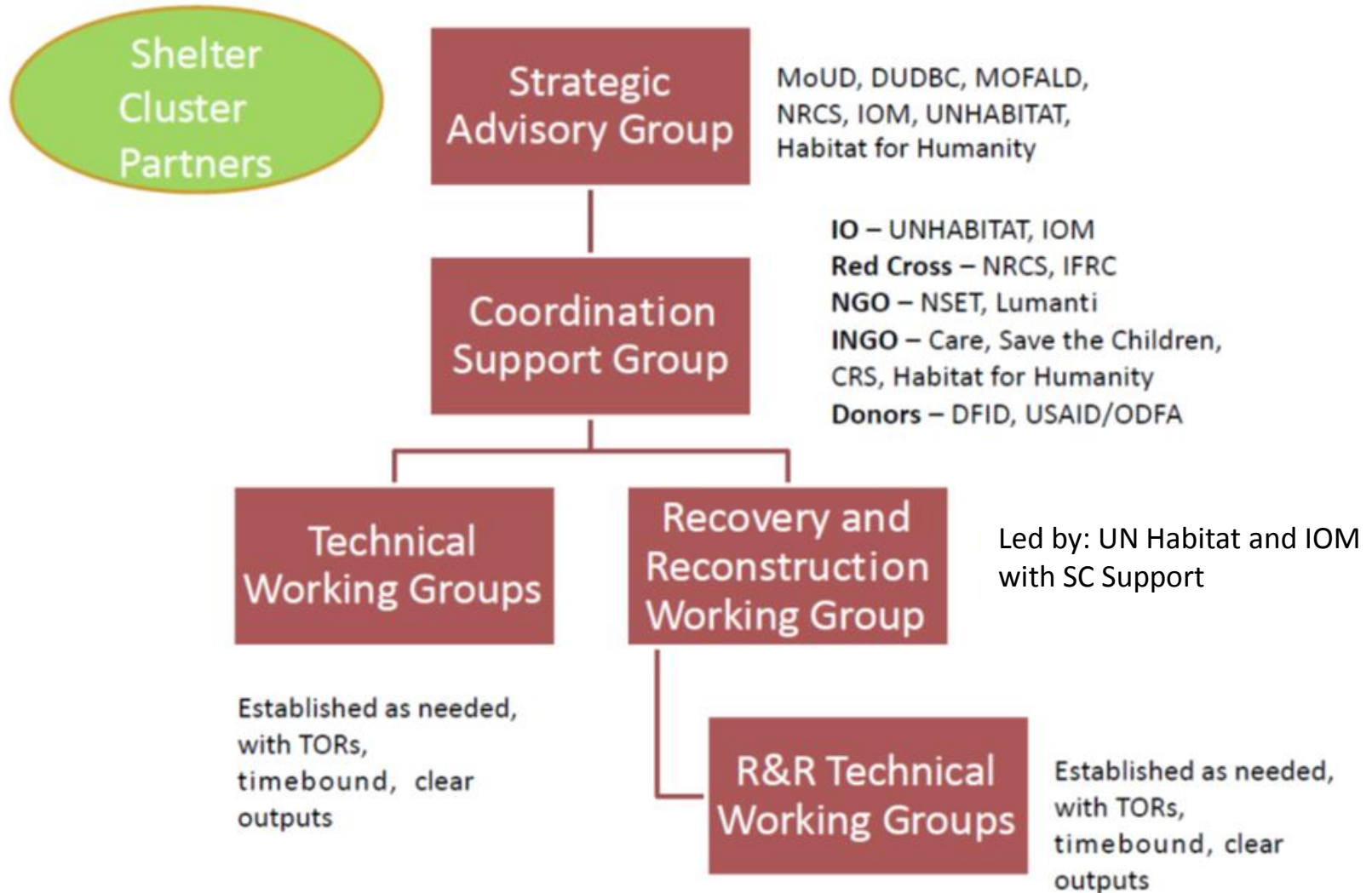
- Over 180 partners registered with the Shelter Cluster
- Coordinated and defined packages of assistance in the emergency and temporary shelter phases
- Effective district level coordination structures in place with support from SC partners



District Focal Points



Coordination Architecture



Transition to Recovery

- Shelter Cluster Recovery position paper
- Recovery and Reconstruction Survey – mapping of R+R activities and intentions
- Establishment of RRWG, led by UN Habitat and IOM, with support from SC Nepal

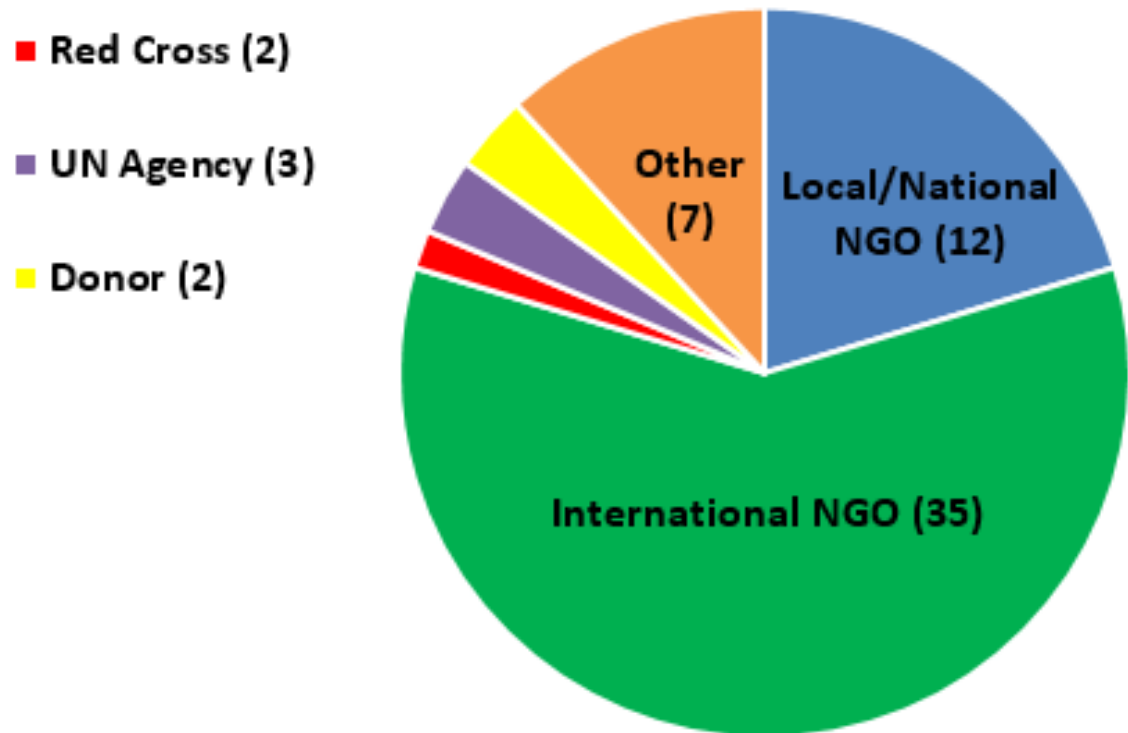


RECOVERY AND RECONSTRUCTION SURVEY ANALYSIS



Survey Response

- 61 Respondents; 35 INGOs, 12 Local / National NGOs



- ‘Other’ included Governmental Organisations, Intergovernmental Organisations, Consultancy Firms, and Private Companies



R+R Activities – Planned & Current

- Training:
 - **29** respondents currently conducting training
 - **30** respondents planning training
- Technical Assistance:
 - **26** respondents currently conducting technical assistance
 - **25** respondents planning technical assistance
- Cash & Markets:
 - **22** respondents are currently working on cash and markets
 - **25** respondents planning cash and market interventions



Funding for R+R

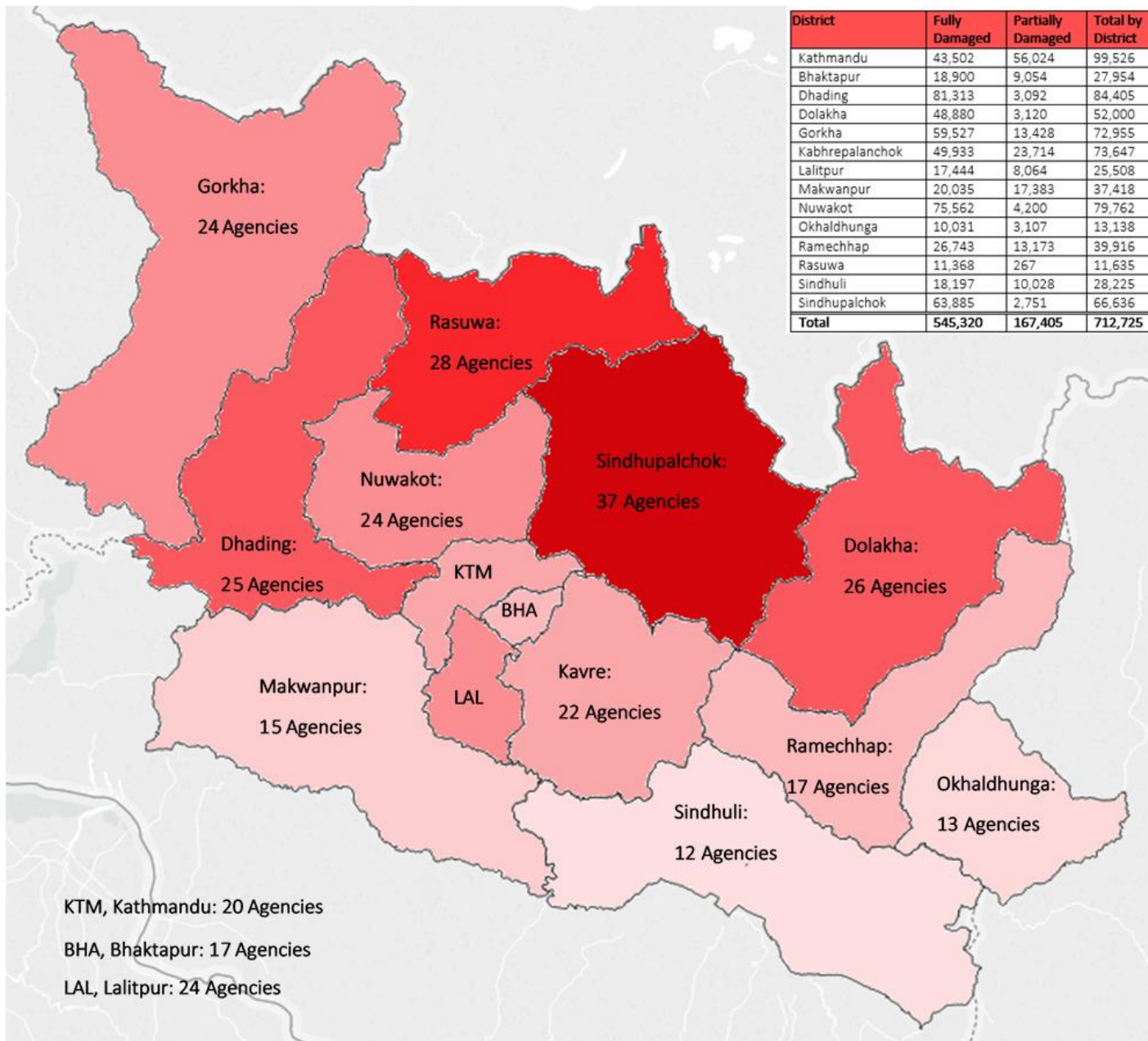
- Based on survey responses, total confirmed funding for forthcoming Recovery and Reconstruction phase: USD 200 million +
- 24 respondents have more than 1 million USD
- 25 respondents have less than 1 million USD



Capacity

- 1793 national technical staff (range of 0-250)
- 301 international technical staff (range of 0-50)
- 422 engineers registered with the Nepal Engineering Council (range of 0-90)
- Total of ~130 offices at district level





RECOVERY AND RECONSTRUCTION WORKING GROUP



RRWG

- Led by a collaboration of UN Habitat and IOM, part of Shelter Cluster Nepal coordination structure
- Objective:
 - To provide a platform for coordination, strategic planning, and technical guidance for agencies involved in longer term recovery and reconstruction, and to engage with the GoN and other key stakeholders to inform the wider housing reconstruction programme



RRWG Meetings

- RRWG Update – once a month, Wednesday at 11am, wider group (special SC meeting, not an additional meeting)
- RRWG TWGs – to deliver specified outputs, under particular topics, smaller meetings
- Regular information updates will be shared by email, on Shelter Cluster website



SHELTER CLUSTER RECOVERY POSITION PAPER



Recovery Position Paper

- Developed to:
 - Guide agencies planning recovery, and
 - Inform GoN and others what contribution POs could make

- Advocates for the importance of technical assistance to be planned and implemented in time and at scale in order to support the needs of the affected population



COLLECTIVE APPROACH TO TECHNICAL ASSISTANCE



Scope of Technical Assistance

Technical	<p>Technical assistance centres (District, VDC level)</p> <p>Training – technical, awareness, practical, training of trainers</p> <p>Demonstration houses</p> <p>Community Resilience Projects</p> <p>Village and house on site demo / QA</p>
Social Mobilisation	<p>Mobile teams</p> <p>PO staff trained</p> <p>PASSA</p> <p>Community orientation sessions</p> <p>Village and house visits</p>
Outreach	<p>Demo house community events</p> <p>Information fairs</p> <p>FAQs collection sessions</p> <p>Media listenership / readership</p>



Why a Collective Approach?

- PDNA estimates:
 - 2700 million USD required for housing reconstruction, repair, and retrofit over a five year period
 - 140 million USD required for Technical Assistance (TA) over a three year period
- Just over 10% of funds available for recovery and reconstruction currently earmarked for TA



Why a Collective Approach? Contd.

- SC strongly advocates for blanket coverage of TA, to align with wider reconstruction programme
- Collective approach supports optimisation of resources, coverage, quality assurance, equity of assistance



Next steps

- Follow up from POs workshop, 10th September
- Further analysis of R+R survey responses, moving to VDC level mapping
- Proposal for TWGs under RRWG, workplan, outputs, resource persons

