

Shelter Cluster Winterization Recommendations for Yemen **October 2019 – February 2020**

i. Background

After almost five years of conflict, and despite all efforts to halt displacement, hunger and disease, the situation in Yemen remains catastrophic and continues to be the worst man-made humanitarian crisis in the world which has torn the nation apart and set back the standard of living by decades. The Shelter/NFI situation deteriorated as a result of the intensified conflict and shift of frontlines, coupled with insecurity and recurrent natural disasters in addition to the alarming deterioration of the Yemeni economy including depreciation of the local currency, unprecedented increases in the price of fuel and high inflation rates resulting in increased prices of basic commodities in local markets including household items and shelter materials. The situation of affected population will continue to deteriorate rapidly on all fronts without urgent action to end the violence and addressing the growing number of humanitarian needs.

The ongoing conflict prevented majority of conflict affected population from recovering their livelihoods, and that more people have by now exhausted their financial savings and are not able to prepare adequately for the winter season. The climate in Yemen varies greatly depending on the geographical region. During the winter season, the country experiences coolness, with frequent frost. The range of temperature can go from 19°C during the highest temperature in winter, into below 0°C at its coldest. Rain is brought in by the southwest winds. Rainfall, which comes in irregular heavy torrents, averages 130 millimetres (5.12 in) annually.

This document represents recommendations for the winterization support as part of the Shelter Cluster efforts to put in place measures to support people of concern in order to avert the risk of humanitarian tragedy and loss of life during the winter months, particularly between October and February. The Shelter Cluster's response requires coordinated efforts by partners and timely implementation to address this situation by providing Winter NFIs or Shelter assistance based on needs through visible modalities primarily vouchers/cash to enable the beneficiaries to choose the items they need, the colour/brand they like and the right size. In-kind distributions could be used in very remote locations where cash systems and markets are not functioning. All information included in this document reflect results from consultations with Cluster partners and building on the experience developed in the previous winterization programs.

Given the current numbers of displaced persons concerned and the growing humanitarian needs, more effort will be required to bolster the response in the affected areas during the winter months with a priority to be given to IDPs living in hosting sites (Collective Centres and Spontaneous Settlements) in very cold locations. The Cluster will seek to provide people most at risk, particularly women and children with special attention are envisaged for individuals with specific needs. The winterization programs should complement other Shelter Cluster response reflected in the Humanitarian Response Plan 2019.

ii. Key Recommendations

- Due to the high number of families unable to prepare adequately for the winter season, coupled with lack of funding, humanitarian agencies are strongly recommended to provide assistance based on assessed winter needs and develop and apply scoring systems on vulnerability criteria in the selection of beneficiaries of winterization assistance, keeping in mind the prioritization criteria proposed by the Shelter Cluster.
- While the first part of the guidelines is dedicated to providing indications for the prioritization of target groups, areas of intervention and activities, the very first filter applied by every organisation should in every case be the verification that the potential beneficiary is not receiving winterization assistance from other Partners and it is the Partner responsibility to ensure that the planned assistance is coordinated well with Sub-National Cluster Coordinators in relevant hubs. Contact information of Sub-National Cluster Coordinators is available in Annex III.
- Agencies are also strictly recommended to ensure that every household in their area of intervention who is eligible for assistance is aware of their entitlements, applies for these and receives them through systematic information campaigns.
- Whenever feasible, monetized winter assistance should be prioritized, according to the beneficiary vulnerability criteria, the proximity of functioning markets, availability of functioning financial institutions and the availability of the needed winter items. In locations with difficult access, though, monetized assistance is not efficient and therefore not recommended.
- There are three types of winterization activities considered by the Shelter Cluster - 1. Distribution of Personal insulation (distribution of winter clothing and blankets) and heating devices/fuel; 2. Shelter insulation. These activities are confirmed as effective ways to improve the preparedness to the cold season.

- IDP hosting sites (Collective Centres and Spontaneous Settlements) that are affected by the low temperatures during the winter months should be considered as a priority within the humanitarian scope.
- Winterization assistance should be delivered ahead of the start of the cold season, to allow target groups to plan and prepare for the winter. As in previous years, though, late programmes - starting in December-January - will also be considered, especially in case of late start of low temperatures. Late programmes should focus on families who - in the first selection round - were considered able to cope with the winter, but subsequently became in need of assistance. In this case, the extent of the assistance should, of course, be proportional to the number of months to be covered.
- For any type of winterization assistance, post-distribution monitoring (PDM) is recommended, to evaluate the impact of the activities on the beneficiaries. The Shelter Cluster has proposed a list of core questions (see Annex IV) that every partner's PDM questionnaire should include. This will allow the Shelter Cluster to compile a multi-agency comprehensive overview of the winterization campaign, to be used as the basis for the planning of the next winterization.

iii. Targeting and Prioritization of Beneficiaries

The primary objective of these recommendations is to define the winterization targeting and prioritization criteria for IDPs, returnees and vulnerable host community members who are living in sub-standard shelter conditions that put them at grave risk of further deterioration in their shelter vulnerability due to the extreme temperatures.

The priority locations determined based on the criteria indicated below whereby the first level of prioritisation are in locations affected by very low temperatures during the winter months.

First level of prioritisation:

- Temperature of the location during the winter months with the following categories:
 - a) Critical: Districts where minimal noted temperature for period October-February are between 0 to 5 degrees Celsius, mean lowest noted temperature in districts is between 5 to 10 degrees and percentage of cold days between 20% to 35%.
 - b) High: Districts where minimal noted temperature for period October-February are between 5 to 7 degrees Celsius, mean lowest noted temperature in districts is between 10 to 13 degrees and percentage of cold days between 7% to 20%.
 - c) Medium: Districts where minimal noted temperature for period October-February are between 7 to 11 degrees Celsius, mean lowest noted temperature in districts is between 13 to 15 degrees and percentage of cold days between 3% to 7%.
 - d) Low or none: Districts where minimal noted temperature for period October-February are above 11 degrees Celsius, mean lowest noted temperature in districts are above 15 degrees and percentage of cold days between 0% to 3%.

The weatherization heat map is available in Annex I.

Second level of prioritisation:

- Locations with high numbers of people with special needs (PWSN).
- Percentage of people in need for Shelter/NFI assistance.

The aim would be to achieve the following:

- Reduction of the shelter vulnerability to winter conditions
- Provide vulnerable families without shelter with a basic emergency shelter and winterisation support to protect and preserve life
- Reduce health and safety risks for already vulnerable families that become elevated during this period
- Through cash and voucher assistance, families would have the choice to prioritise their winter needs
- Minimize negative effects on the most vulnerable population including negative coping mechanisms associated with early marriage, child labour and other protection concerns including risks associated with firewood collection.

The following beneficiary selection criteria in addition to the Shelter vulnerability criteria should be considered

- IDPs living in Hosting Sites including those living in open space or informal settlements and will not be able to withstand the weather during the winter season without some weatherproofing support

- IDPs living in hosting arrangement and rented accommodation in addition to returnees and host communities that are living in sub-standard shelters that are in need for weatherproofing or personal insulation
- IDPs that are economically poor without the means to provide for their winterisation needs and without assistance their health and wellbeing would deteriorate significantly
- IDPs living in mountainous areas at high altitudes that are more vulnerable to winter conditions also those affected by flash flooding and not responded to their needs.
- IDPs at risk of forced eviction or being forced to relocate and in urgent need of shelter assistance to protect them from harsh weather temperatures during the winter.
- IDPs living in damaged, makeshift and poor shelter conditions

The methodology of estimating the People in need and prioritization are as follow:

Group	Targeted Groups	People in Need	People Targeted		
			First Priority	Second Priority	Third Priority
A	IDP living in hosting sites	Weather Temperature (Critical + High + Medium) *	Weather Temperature (Critical)	Weather Temperature (High)	Weather Temperature (Medium)
B	IDP living in Hosting Arrangement	<ul style="list-style-type: none"> ▪ Weather Temperature (Critical + High + Medium) ▪ Percentage of People with Specific Needs (Critical + Medium) ▪ Percentage of people in need for Shelter/NFI assistance 	<ul style="list-style-type: none"> ▪ Weather Temperature (Critical) ▪ Percentage of People with Specific Needs (Critical) ▪ Percentage of people in need for Shelter/NFI assistance 	<ul style="list-style-type: none"> ▪ Weather Temperature (High) ▪ Percentage of People with Specific Needs (Critical) ▪ Percentage of people in need for Shelter/NFI assistance 	<ul style="list-style-type: none"> ▪ Weather Temperature (Medium) ▪ Percentage of People with Specific Needs (Critical) ▪ Percentage of people in need for Shelter/NFI assistance
C	IDP living in Rented Accommodation	Same to Group B	Same to Group B	Same to Group B	Same to Group B
D	Returnees	Same to Group B	Same to Group B	Same to Group B	Same to Group B
E	Host Community	20% of total people of in need	20% of overall target	20% of overall target	20% of overall target

Table I: Methodology of estimating the People in need and prioritization

iv. Planning assumptions

Between October 2019 and February 2020, the Shelter Cluster anticipates 352,514 vulnerable families in need of the winterization assistance with 52,063 families should be assisted as a first priority, 135,530 families considered as a second priority and 118,060 families are third priority.

The below table illustrates the figures of families in need and families targeted at the Governorate level which represent one or more districts that are affected with the low temperatures during the winter season. It was estimated based on the targeting and prioritization methodology illustrated in Table I. The figures at the district level is available in Annex II.

Governorate	Families In Need	Families Targeted		
		First Priority	Second Priority	Third Priority
Abyan	3,816	0	2,519	370
Aden	5,627	0	0	3,964
Al Bayda	4,536	1,487	1,814	277
Al Dhale'e	11,642	0	8,776	2,636
Al Hudaydah	13,756	0	0	9,384
Al Jawf	22,767	1,719	18,508	336
Al Maharah	271	0	33	41
Al Mahwit	1,247	308	192	239
Amanat Al Asimah	14,021	182	1,608	0
Amran	29,042	16,490	4,448	7,739
Dhamar	12,262	3,623	0	7,710
Hadramaut	1,933	0	801	108
Hajjah	47,743	0	0	47,743
Ibb	13,774	4,559	4,289	1,037
Lahj	14,197	0	2,280	767
Marib	92,852	6,193	58,177	186
Raymah	2,735	0	0	1,813
Sa'ada	43,612	9,236	26,964	2,077
Sana'a	8,305	6,881	267	903
Shabwah	5,402	1,385	1,277	2,628
Socotra	891	0	239	178
Taizz	34,889	0	3,337	27,924
Grand Total	385,320	52,063	135,530	118,060

v. Winterization Support

The financial constraints limit the purchase capacity of both displaced and non-displaced populations. In the last years, winterization programmes helped IDPs and other affected population to purchase basic winter items had in general a particularly relevant impact and are still considered as a priority. Such interventions should of course be informed by an assessment of local markets (where most of the potential beneficiaries usually purchase these items) and be followed by a PDM (post-distribution monitoring) campaign. Personal insulation and Shelter insulation are considered effective ways to improve people's preparedness for the cold season.

The Shelter Cluster winterization recommendations will focus on the following areas of intervention in order to avert the risk of humanitarian catastrophe and loss of life:

Type of assistance	Description of the assistance	Unit Cost (USD) per family
Winter NFIs Support (Personal Insulation and heating)	<u>Blankets (per person)</u> : one high thermal single blanket or two medium thermal single blankets or one double blanket.	\$70
	<u>Clothes (per person)</u> : Male: Winter fleece pyjama, jacket, socks, woollen hat, thermal underwear and shawl. Female: Winter fleece pyjama, socks, sweater, woollen scarf, thermal underwear and shawl. Children: Winter fleece pyjama, woollen hat, sweater, gloves, thermal underwear and socks. Infant (under or over 2 years): Winter fleece infant blanket, woollen hat, pyjama, thermal underwear and socks.	\$90
	Heating Grant or Materials (i.e. stove, heating fuel)	\$70
	Total	\$230
	Winter Shelter Support (Shelter insulation)	Shelter in-kind materials or cash grants for basic minor rehabilitation, maintenance or upgrade of shelter to ensure that the shelter is sealed and can accommodate and protect families from the harsh weather during winter season

Points to be considered:

- The beneficiaries are to be provided with one type of assistance either Shelter or NFI support given to the severe lack of funding of the Shelter Cluster programmes.
- Winter Grant should be equivalent to the cost of in-kind kit

vi. Financial requirements

A total of **\$75,666,000 USD** requested for activities planned to be implemented in the affected areas during the winter season.

Priority Level	Families Targeted	Total Budget Required (USD\$)*
First Priority	52,063	\$13,800,000
Second Priority	135,530	\$35,916,000
Third Priority	118,060	\$31,286,000
Grand Total	305,653	\$81,000,000

* The unit cost used is \$265 USD which include \$230 USD the amount that should be transferred to the beneficiaries for the cash/voucher modality and it represents the cost of the kit for the in-kind assistance also max. 15% (or \$35) added to cover operational costs in the case for the cash/voucher modality (i.e. staffing, transfer fees, etc.) or in-kind modality (i.e. staffing, warehousing, distribution, etc.).

vii. Modality of distribution

As indicated in the Shelter Cluster *Distribution Guidelines*, the distribution of cash/voucher or in-kind commodities needs to follow certain minimum guidelines to ensure the safety of the Partner and the beneficiaries.

- Partners shall define the feasibility of implementing the abovementioned activities through cash or voucher or in-kind considering various factors in the targeted areas (i.e. availability of stocks in the local market, functionality of cash systems).

- Engagement with the relevant stakeholders is very crucial including with Beneficiaries, communities, relevant Clusters, Partners working in the location and local authorities. Partners are required to ensure mutual collaboration and coordination with relevant local authorities at all levels.
- Assessment and verification of the target population is essential to verify the populations that are in need of the winter assistance. The assessment should also verify locations that can be provided with cash/voucher assistance and those that have to be provided with in kind assistance.
- Ensure security and access to the locations for both Partners and the beneficiaries that can be sustained.
- Ensure that a complaints mechanism is established and well publicised before the start of the distribution so that beneficiaries are aware of how their grievances would be addressed.
- Post distribution monitoring including qualitative and quantitative information including information on whether the project achieved its outcomes of making the target beneficiaries less vulnerable to the winter and qualitative information on the satisfaction of the beneficiaries and the use of the cash or in-kind input.

viii. List of Annexes

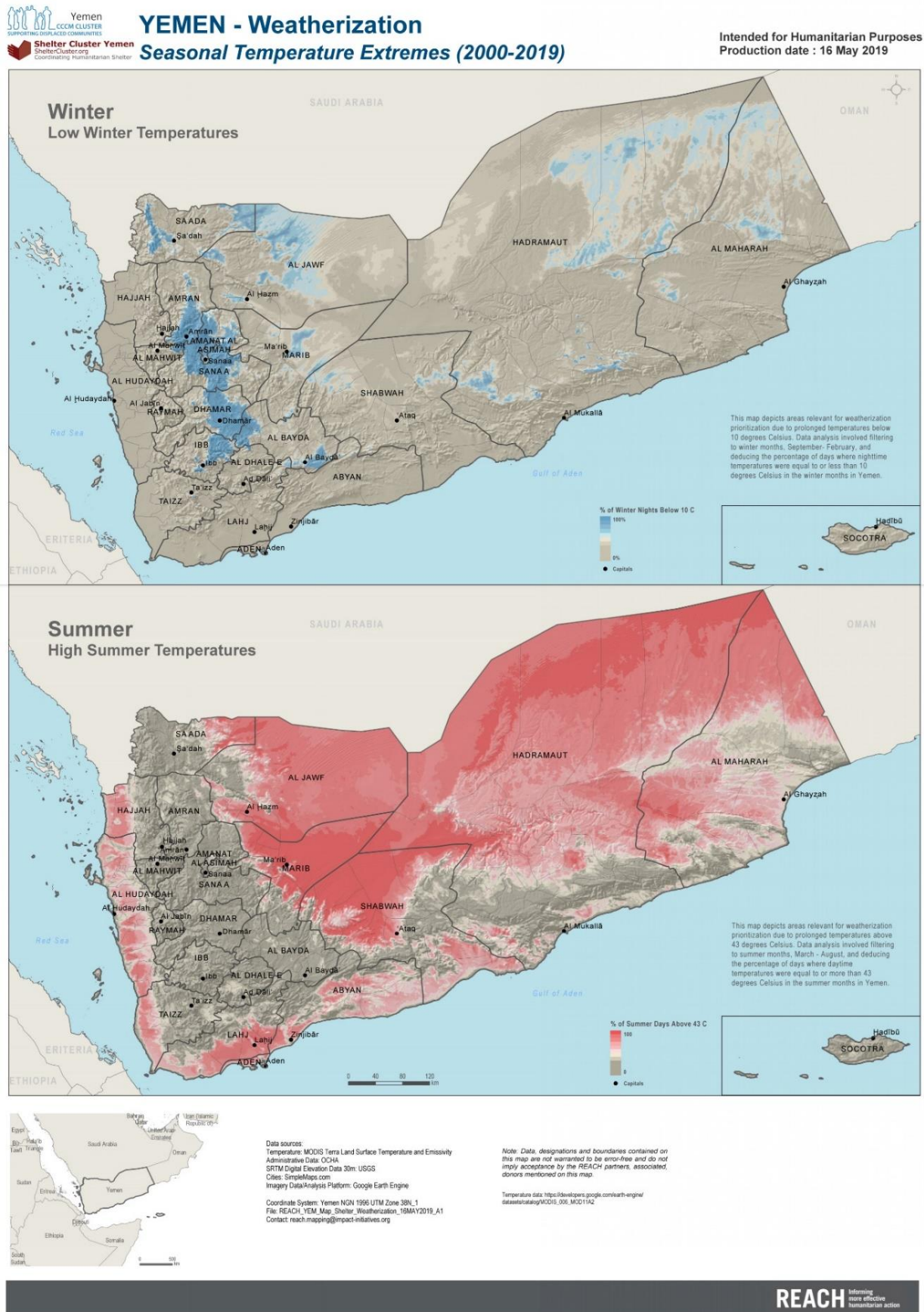
Annex I - Map of the weather temperatures during the winter season

Annex II - Table of People in Need and Targeted at the district level

Annex III – Map of the Shelter Cluster Structure

Annex IV - PDM Questions/Indicators

Annex I: Map of the weatherization during the winter season¹



¹ The maps were developed with support from REACH and they are available at [Nationwide](#) and [Governorate level](#).

Annex II: Table of People in Need and Targeted at the district level

Governorate	District	Families In Need	Families Targeted		
			First Priority	Second Priority	Third Priority
Abyan	Ahwar	39	0	0	6
	Al Mahfad	53	0	0	53
	Al Wade'a	63	0	63	0
	Jayshan	16	0	16	0
	Khanfir	2,176	0	2,176	0
	Lawdar	393	0	66	0
	Mudiyah	76	0	76	0
	Rasad	36	0	0	36
	Sarar	23	0	0	23
	Sibah	122	0	122	0
	Zingibar	819	0	0	252
Abyan Total		3,816	0	2,519	370
Aden	Al Buraiqeh	3,434	0	0	2,871
	Al Mansura	0	0	0	0
	Al Mualla	0	0	0	0
	Ash Shaikh Outhman	340	0	0	195
	Attawahi	0	0	0	0
	Craiter	0	0	0	0
	Dar Sad	1,824	0	0	869
	Khur Maksar	29	0	0	29
Aden Total		5,627	0	0	3,964
Al Bayda	Al A'rsh	35	35	0	0
	Al Bayda	16	0	16	0
	Al Bayda City	713	0	713	0
	Al Malagim	78	0	64	0
	Al Quraishyah	363	71	0	0
	Ar Ryashyyah	280	280	0	0
	As Sawadiyah	352	0	352	0
	As Sawma'ah	150	0	150	0
	Ash Sharyah	165	0	6	0
	At Taffah	49	0	0	49
	Az Zahir	509	0	16	0
	Dhi Na'im	253	0	253	0
	Maswarah	125	0	125	0
	Mukayras	98	98	0	0
	Na'man	57	0	0	57
	Nati'	171	0	0	171
	Rada'	459	459	0	0
	Radman Al Awad	119	0	119	0
Sabah	133	133	0	0	
Wald Rabi'	411	411	0	0	
Al Bayda Total		4,536	1,487	1,814	277
Al Dhale'e	Ad Dhale'e	4,195	0	4,195	0

	Al Azariq	981	0	981	0
	Al Husha	294	0	0	294
	Al Hussein	1,637	0	0	1,637
	Ash Shu'ayb	147	0	0	23
	Damt	905	0	905	0
	Jahaf	682	0	0	682
	Juban	134	0	28	0
	Qa'atabah	2,667	0	2,667	0
Al Dhale'e Total		11,642	0	8,776	2,636
Al Hudaydah	Ad Dahi	0	0	0	0
	Ad Durayhimi	0	0	0	0
	Al Garrahi	0	0	0	0
	Al Hajjaylah	0	0	0	0
	Al Hali	0	0	0	0
	Al Hawak	0	0	0	0
	Al Khawkhah	3,168	0	0	3,168
	Al Mansuriyah	1,519	0	0	1,519
	Al Marawi'ah	0	0	0	0
	Al Mighlaf	0	0	0	0
	Al Mina	0	0	0	0
	Al Munirah	224	0	0	224
	Al Qanawis	2,638	0	0	2,289
	Alluheyah	0	0	0	0
	As Salif	0	0	0	0
	As Sukhnah	3,048	0	0	366
	At Tuhayat	0	0	0	0
	Az Zaydiyah	530	0	0	530
	Az Zuhrah	0	0	0	0
	Bajil	0	0	0	0
	Bayt Al Faqiah	0	0	0	0
	Bura	0	0	0	0
	Hays	2,629	0	0	1,288
	Jabal Ra's	0	0	0	0
	Kamaran	0	0	0	0
	Zabid	0	0	0	0
Al Hudaydah Total		13,756	0	0	9,384
Al Jawf	Al Ghayl	1,101	0	1,101	0
	Al Hazm	3,176	0	3,176	0
	Al Humaydat	570	0	0	336
	Al Khalq	510	0	510	0
	Al Maslub	606	0	606	0
	Al Matammah	909	0	909	0
	Al Maton	5,770	0	5,770	0
	Az Zahir	1,898	0	1,898	0
	Bart Al Anan	1,811	0	1,811	0
	Khabb wa ash Sha'af	2,138	1,719	0	0
	Kharab Al Marashi	3,404	0	2,132	0

	Rajuzah	874	0	595	0
Al Jawf Total		22,767	1,719	18,508	336
Al Maharah	Al Ghaydah	25	0	25	0
	Al Masilah	0	0	0	0
	Hat	5	0	5	0
	Hawf	0	0	0	0
	Huswain	37	0	0	37
	Man'ar	0	0	0	0
	Qishn	4	0	0	4
	Sayhut	185	0	0	0
	Shahan	15	0	3	0
Al Maharah Total		271	0	33	41
Al Mahwit	Al Khabt	0	0	0	0
	Al Mahwait	0	0	0	0
	Al Mahwait City	510	0	0	2
	Ar Rujum	237	0	0	237
	At Tawilah	192	0	192	0
	Bani Sa'd	0	0	0	0
	Hufash	0	0	0	0
	Milhan	0	0	0	0
	Shibam Kawkaban	308	308	0	0
Al Mahwit Total		1,247	308	192	239
Amanat Al Asimah	Al Wahdah	1,541	0	1,541	0
	As Sabain	0	0	0	0
	Assafi'yah	0	0	0	0
	At Tahrir	0	0	0	0
	Ath'thaorah	681	0	50	0
	Az'zal	17	0	17	0
	Bani Al Harith	11,123	57	0	0
	Ma'ain	108	108	0	0
	Old City	534	0	0	0
Shu'aub	17	17	0	0	
Amanat Al Asimah Total		14,021	182	1,608	0
Amran	Al Ashah	593	0	0	228
	Al Madan	1,104	0	0	1,104
	Al Qafлах	1,804	0	0	1,804
	Amran	5,851	5,851	0	0
	As Sawd	998	0	998	0
	As Sudah	881	0	0	881
	Bani Suraim	631	631	0	0
	Dhi Bin	520	520	0	0
	Habur Zulaymah	1,239	0	0	1,239
	Harf Sufyan	1,844	0	1,844	0
	Huth	1,606	0	1,606	0
	Iyal Surayh	1,048	1,048	0	0
	Jabal Iyal Yazid	2,495	2,495	0	0

	Khamir	2,065	2,065	0	0
	Kharif	533	533	0	0
	Maswar	1,318	1,318	0	0
	Raydah	1,345	1,345	0	0
	Shaharah	2,483	0	0	2,483
	Suwayr	0	0	0	0
	Thula	684	684	0	0
Amran Total		29,042	16,490	4,448	7,739
Dhamar	Al Hada	745	745	0	0
	Al Manar	267	0	0	267
	Anss	144	144	0	0
	Dawran Aness	929	0	1	0
	Dhamar City	89	89	0	0
	Jabal Ash sharq	433	0	0	433
	Jahran	2,450	2,450	0	0
	Maghirib Ans	629	0	0	629
	Mayfa'at Anss	195	195	0	0
	Utmah	3,334	0	0	3,334
	Wusab Al Ali	3,047	0	0	3,047
	Wusab As Safil	0	0	0	0
Dhamar Total		12,262	3,623	1	7,710
Hadramaut	Ad Dis	0	0	0	0
	Adh Dhli'a'ah	0	0	0	0
	Al Abr	752	0	752	0
	Al Mukalla	56	0	0	56
	Al Mukalla City	0	0	0	0
	Al Qaf	0	0	0	0
	Al Qatn	26	0	0	0
	Amd	12	0	12	0
	Ar Raydah Wa Qusayar	269	0	32	0
	As Sawm	2	0	0	0
	Ash Shihr	447	0	2	0
	Brom Mayfa	20	0	0	20
	Daw'an	3	0	3	0
	Ghayl Ba Wazir	40	0	0	0
	Ghayl Bin Yamin	0	0	0	0
	Hagr As Sai'ar	0	0	0	0
	Hajr	13	0	0	13
	Huraidhah	0	0	0	0
	Rakhyah	1	0	0	0
	Rumah	0	0	0	0
	Sah	0	0	0	0
	Sayun	151	0	0	0
	Shibam	30	0	0	0
	Tarim	101	0	0	15
	Thamud	0	0	0	0
	Wadi Al Ayn	5	0	0	0

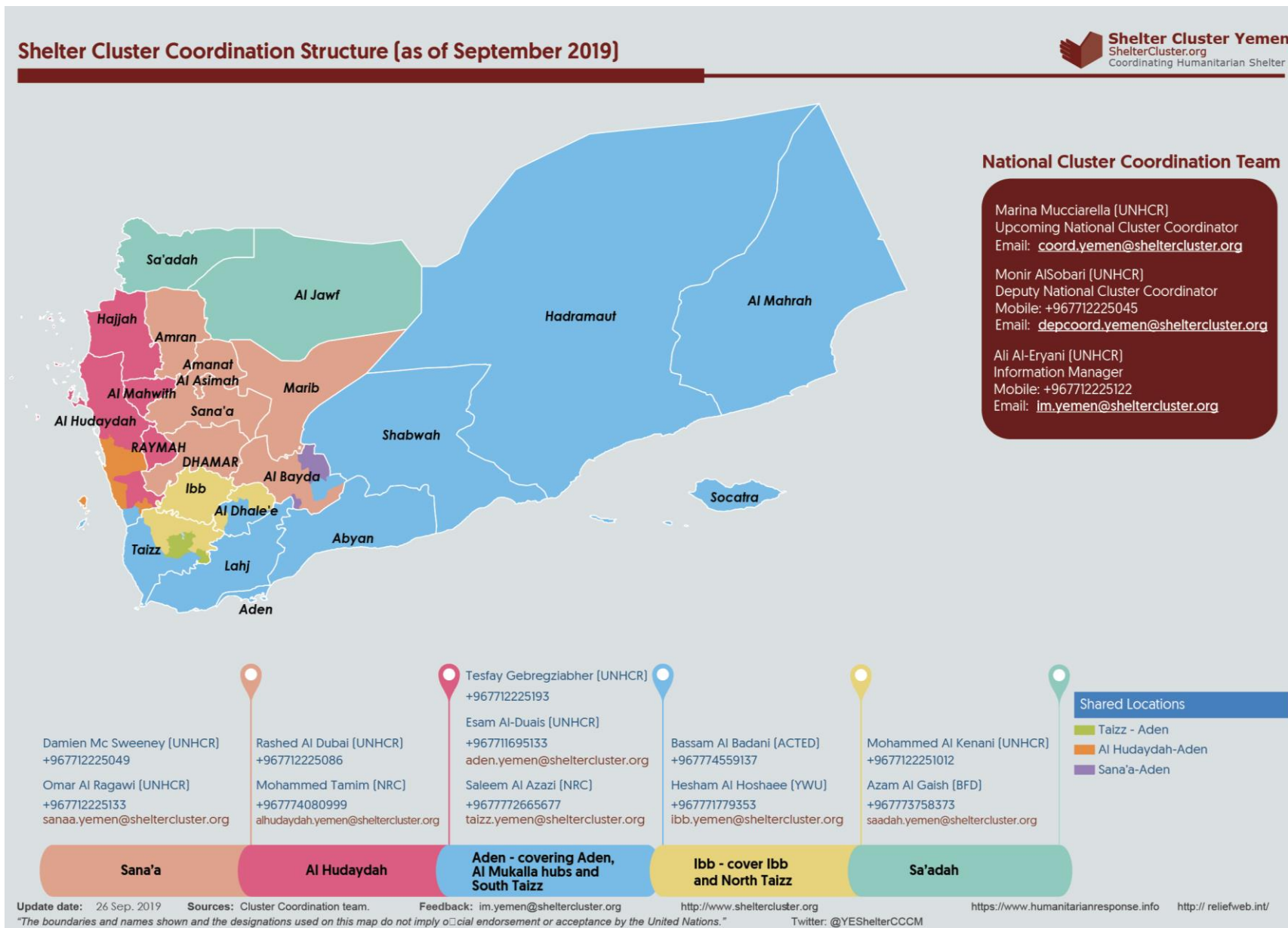
	Yabuth	5	0	0	4
	Zamakh wa Manwakh	0	0	0	0
Hadramaut Total		1,933	0	801	108
Hajjah	Abs	39,510	0	0	39,510
	Aflah Al Yaman	0	0	0	0
	Aflah Ash Shawm	0	0	0	0
	Al Jamimah	0	0	0	0
	Al Maghrabah	0	0	0	0
	Al Mahabishah	895	0	0	895
	Al Miftah	457	0	0	457
	Ash Shaghadirah	0	0	0	0
	Ash Shahil	0	0	0	0
	Aslem	0	0	0	0
	Bakil Al Mir	0	0	0	0
	Bani Al Awam	670	0	0	670
	Bani Qa'is	0	0	0	0
	Hajjah	67	0	0	67
	Hajjah City	26	0	0	26
	Haradh	0	0	0	0
	Hayran	0	0	0	0
	Khayran Al Muharraq	0	0	0	0
	Ku'aydinah	0	0	0	0
	Kuhlan Affar	183	0	0	183
	Kuhlan Ash Sharaf	429	0	0	429
	Kushar	3,519	0	0	3,519
	Mabyan	743	0	0	743
	Midi	1,244	0	0	1,244
	Mustaba	0	0	0	0
	Najrah	0	0	0	0
	Qaf Shamer	0	0	0	0
	Qarah	0	0	0	0
	Sharas	0	0	0	0
	Wadhrah	0	0	0	0
Washhah	0	0	0	0	
Hajjah Total		47,743	0	0	47,743
Ibb	Al Dhihar	3,066	0	440	0
	Al Makhadir	125	0	125	0
	Al Mashannah	167	0	167	0
	Al Qafr	538	0	0	0
	Al Udayn	451	0	0	451
	An Nadirah	589	589	0	0
	Ar Radmah	354	9	0	0
	As Sabrah	450	0	70	0
	As Saddah	439	439	0	0
	As Sayyani	1,083	1,083	0	0
	Ash Sha'ir	187	187	0	0
	Ba'dan	635	635	0	0

	Dhi As Sufal	3,301	0	3,301	0
	Far Al Udayn	0	0	0	0
	Hazm Al Udayn	0	0	0	0
	Hubaysh	186	0	186	0
	Ibb	503	503	0	0
	Jiblah	620	620	0	0
	Mudhaykhirah	586	0	0	586
	Yarim	494	494	0	0
Ibb Total		13,774	4,559	4,289	1,037
Lahj	Al Had	176	0	7	0
	Al Hawtah	6,293	0	0	28
	Al Madaribah Wa Al Arah	0	0	0	0
	Al Maflahy	41	0	7	0
	Al Maqatirah	578	0	0	578
	Al Milah	104	0	104	0
	Al Musaymir	359	0	359	0
	Al Qabbaytah	1,964	0	8	0
	Habil Jabr	41	0	0	41
	Halimayn	43	0	0	43
	Radfan	46	0	0	0
	Tuban	3,928	0	1,248	0
	Tur Al Bahah	547	0	547	0
	Yafa'a	39	0	0	39
	Yahr	38	0	0	38
Lahj Total		14,197	0	2,280	767
Marib	Al Abdiyah	2,076	0	1,778	0
	Al Jubah	558	0	558	0
	Bidbadah	818	0	818	0
	Harib	1,061	0	1,061	0
	Harib Al Qaramish	861	0	861	0
	Jabal Murad	179	0	30	0
	Mahliyah	716	0	716	0
	Majzar	3,634	0	3,634	0
	Marib	8,980	6,193	0	0
	Marib City	64,287	0	39,334	0
	Medghal	2,374	0	2,374	0
	Raghwan	1,289	0	1,289	0
	Rahabah	295	0	0	186
	Sirwah	5,724	0	5,724	0
Marib Total		92,852	6,193	58,177	186
Raymah	Al Jabin	697	0	0	27
	Al Jafariyah	0	0	0	0
	As Salafiyah	627	0	0	627
	Bilad At Ta'am	0	0	0	0
	Kusmah	253	0	0	1
	Mazhar	1,158	0	0	1,158

Raymah Total		2,735	0	0	1,813
Sa'ada	Al Dhafer	0	0	0	0
	Al Hashwah	240	0	240	0
	As Safra	2,808	0	2,808	0
	Baqim	3,852	0	3,852	0
	Ghamr	469	0	0	196
	Haydan	5,197	0	135	0
	Kitaf wa Al Boqe'e	4,256	4,256	0	0
	Majz	3,663	3,663	0	0
	Monabbih	1,881	0	0	1,881
	Qatabir	91	91	0	0
	Razih	2,469	0	2,469	0
	Sa'adah	9,375	0	9,375	0
	Sahar	8,085	0	8,085	0
	Saqayn	1,226	1,226	0	0
	Shada'a	0	0	0	0
Sa'ada Total		43,612	9,236	26,964	2,077
Sana'a	Al Haymah Ad Dakhiliyah	80	0	80	0
	Al Haymah Al Kharijiyah	195	0	0	195
	Al Husn	34	3	0	0
	Arhab	239	239	0	0
	Attyal	677	677	0	0
	Bani Dhabyan	117	0	0	117
	Bani Hushaysh	278	278	0	0
	Bani Matar	645	645	0	0
	Bilad Ar Rus	123	123	0	0
	Hamdan	3,871	3,871	0	0
	Jihanah	238	15	0	0
	Khwlan	187	0	187	0
	Manakhah	591	0	0	591
	Nihm	570	570	0	0
	Sa'fan	0	0	0	0
	Sanhan	460	460	0	0
Sana'a Total		8,305	6,881	267	903
Shabwah	Ain	182	0	70	0
	Al Talh	54	0	54	0
	Ar Rawdah	10	0	0	10
	Arma	18	0	18	0
	As Said	701	0	701	0
	Ataq	234	0	234	0
	Bayhan	849	0	0	849
	Dhar	51	0	0	51
	Habban	9	0	0	9
	Hatib	41	0	41	0
	Jardan	60	0	60	0
	Mayfa'a	720	0	0	720
	Merkhah Al Ulya	90	0	0	90

	Merkhah As Sufla	99	0	99	0
	Nisab	280	0	0	280
	Rudum	619	0	0	619
	Usaylan	1,385	1,385	0	0
Shabwah Total		5,402	1,385	1,277	2,628
Socotra	Hidaybu	713	0	239	0
	Qulensya Wa Abd Al Kuri	178	0	0	178
Socotra Total		891	0	239	178
Taizz	Al Ma'afer	2,473	0	0	2,473
	Al Mawasit	880	0	0	880
	Al Misrakh	1,720	0	1,720	0
	Al Mudhaffar	0	0	0	0
	Al Mukha	4,717	0	0	4,717
	Al Qahirah	0	0	0	0
	Al Wazi'iyah	2,893	0	0	2,893
	As Silw	1,124	0	0	1,124
	Ash Shamayatayn	2,014	0	0	2,014
	At Ta'iziyah	4,919	0	0	2,017
	Dhubab	3,076	0	0	3,076
	Dimnat Khadir	2,566	0	0	2,566
	Hayfan	974	0	0	974
	Jabal Habashy	1,738	0	0	1,738
	Maqbanah	0	0	0	0
	Mashra'a Wa Hadnan	11	0	0	11
	Mawiyah	1,535	0	0	1,078
	Mawza	1,096	0	0	1,096
	Sabir Al Mawadim	1,617	0	1,617	0
	Salh	0	0	0	0
	Sama	303	0	0	34
	Shara'b Ar Rawnah	0	0	0	0
	Shara'b As Salam	1,233	0	0	1,233
Taizz Total		34,889	0	3,337	27,924
Grand Total		385,320	52,063	135,530	118,060

Annex III: Map of the Shelter Cluster Structure



Annex IV: PDM Questions/Indicators

This is the list of core questions that the Shelter Cluster recommends agencies to include in their Winterization PDM (post-distribution monitoring) questionnaires, in order to harmonise the collection of data and allow the consolidation of PDM findings from different agencies in one single document.

Questions
Shelter Typology (Makeshift shelter, Emergency Shelter, Transitional Shelter, Private or public building/land, With host Community (Hosted), Rented apartment/house and Prefabricated shelter or container)
Number of people per household
Square meters or number of rooms as proxy if not available
Heating type (Communal, electrical heater, coal stove, wood/firewood stove, etc.)
Damage or Non-Damaged accommodation – If Damaged (which category of damages)
Inspection of accommodation to check for adequate insulation: (no leaking roof & windows, cracks in the walls or floor, there are windows, doors and flooring)
Rating of heating source as good or poor
Number of months that the heating source lasts
Sources of income and average income
Average cost of rent per month from October-February
Average cost of heating per month from October- February: Pre and post installation of insulation
Average cost of water per month from October- February
Availability of hot water
Status: IDP, Returnee, Host Community
Other vulnerability category: E.g. persons with disabilities, elderly persons, persons with chronic illnesses, large families, etc.
of people reached and geographical coverage
Value for money and quality of assistance
Impact of the response and satisfaction of the beneficiaries
What would be the beneficiary's best modality of implementation? (To inform next winterization program)
Percentage of households receiving winter assistance before the end of December
Percentage of beneficiaries reporting that winter assistance was timely and match their winter needs